

# Bushfire Recovery Newsletter



bega valley  
*Together*

October 2020

## PATHWAY HOME WORKSHOPS

We recently held Pathway Home workshops in Eden and Cobargo, where architect, Tim Lee, and our DA Hub staff helped participants take the next step towards rebuilding lost homes.

There was lots covered, including an approximate breakdown of rebuilding costs that was surprising to some.

In these figures, Tim Lee pointed out the cost of rebuilding a house only accounts for about 45% of the total costs to move in.

To provide a visual breakdown of this information alongside some ways to keep costs down, we've developed the infographic you can see here on the right.

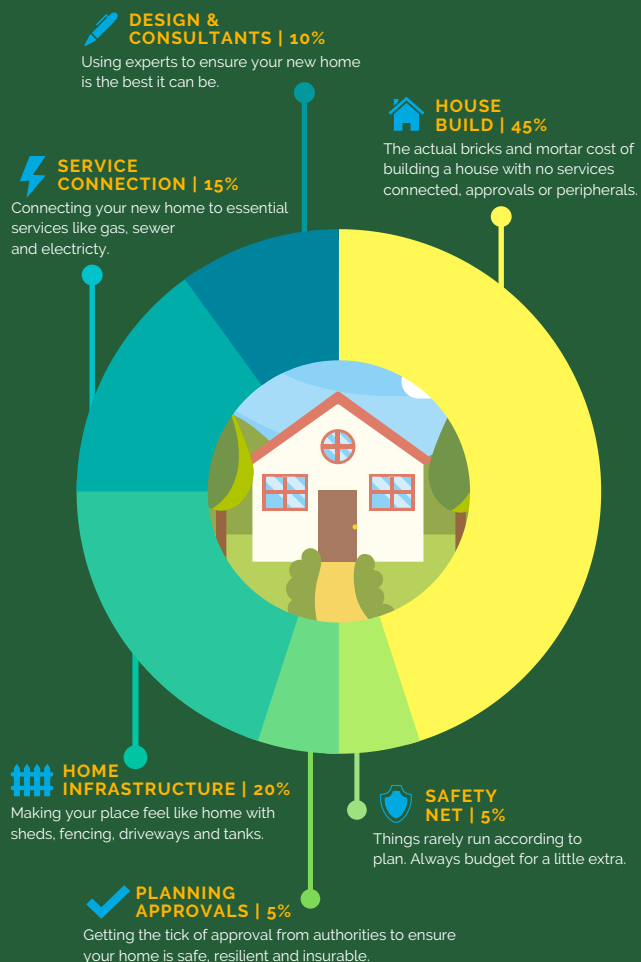
As you can see, there is still lots of assistance being offered from multiple organisations. This just covers part of what is being offered, and we advise you to seek the full raft of assistance through our Bega Valley Together webpage,

If finding the right assistance package for you is overwhelming at the moment, then please feel free to contact our Recovery Support Service on 6499 2345.

And don't worry if you couldn't make it to a workshop; our DA Hub staff are here to help. Bushfire impacted people are always prioritised.

## HOW MUCH DOES IT COST TO REBUILD?

AND HOW CAN I MAKE IT CHEAPER?



### MAKE IT CHEAPER

- Organisations like Building Angels can support you with professional planning and building services, and discounted supplies.
- Off-the-shelf architectural plans may be an option. Also, Council is providing BAL rating assessments free to bushfire impacted people.
- Council and the NSW government are offering rates and charges relief packages to eligible people. Also, consider solar to save on power bills.
- All DA lodgement fees, including pre-lodgement advice have been waived for bushfire impacted people wanting to rebuild.
- The federal government's HomeBuilder scheme offers \$25,000 to eligible buyers of new and off-the-plan homes. Deadline is 31 Dec 2020, and building must commence within three months of this date.
- Build your safety net. Start with the Bega Valley Together, National Bushfire Relief Agency, and the NSW Bushfire Customer Care websites.



web: [begavalley.nsw.gov.au/bega-valley-together](http://begavalley.nsw.gov.au/bega-valley-together)  
call: 6499 2345 email: [recovery@begavalley.nsw.gov.au](mailto:recovery@begavalley.nsw.gov.au)

SOURCE: The Australian Institute of Architects. House rebuild costs are intended as a guide only. Actual costs are site specific.

## DA HUB PRIORITIES

As more people start on the road to rebuilding, it's inevitable that our DA Hub will experience a spike in the number of lodgements and customer enquiries.

This high volume of work is in addition to every day applications and enquiries we receive. Correspondence from bushfire impacted people is always prioritised above our everyday customers due to the urgency of your situation.

However, even when prioritised, there is still a longer-than-usual processing time due to the unprecedented number of customer enquiries.

If you are just starting on the pathway home, you may want to consider working with a building designer to apply for a fast-tracked complying development that can give you planning and construction approval in as little as 30 days. Call 6499 2209 for more details.

## RURAL & AG SUPPORT

Dave Hilhorst is a bushfire recovery worker offering free and confidential help to rural residents. If you're overwhelmed by the task ahead, contact Dave on 0417 019 197 / [David.hilhorst@dpi.nsw.gov.au](mailto:David.hilhorst@dpi.nsw.gov.au).

## COMMUNITY CATCH-UP DATES

Wonboyn RFS Shed / 10 October / 2pm-5pm  
Bemboka Hall / 11 October / 11am-1pm  
Towamba Hall / 17 October / 11am-2pm  
Quaama Hall / 18 October / 12pm-2pm  
Cobargo SoA / 20 October / 2pm-5pm  
Wyndham Markets / 25 October / 8:30am-1pm  
Kiah RFS Shed / 29 October / 2pm-5pm

## BEMBOKA TIP OPEN AGAIN

The Bemboka tip is open again on Saturdays from 10am-2:30pm. We're planning to expand rural waste collections. Learn more at an info session: 23 Oct at Bemboka Hall. Register on Council's Have Your Say webpage.

## WYNDHAM GETS MOBILE

Wyndham residents can now get improved mobile phone reception thanks to a new Telstra tower recently installed.

## FINANCIAL ASSISTANCE

The NSW government is offering landholders up to \$5000 per kilometre to replace boundary fencing lost in the fires. Visit: [lls.nsw.gov.au](https://lls.nsw.gov.au) or call 1300 795 299.

**NEW.** The state and federal government's Bushfire Community Recovery and Resilience Fund is now accepting applications. This fund looks to help organisations that are promoting numerous recovery, well-being and community strengthening programs. For more information email: [bccrf@resilience.nsw.gov.au](mailto:bccrf@resilience.nsw.gov.au)

If you are planning to buy in another location, instead of rebuild, the NSW government is offering up to \$55,000 towards the stamp duty on the replacement property. Call Service NSW on 13 77 88.

Service NSW is also offering \$10,000 small business bushfire support grants to eligible businesses in the Bega Valley. Call 13 77 88.

St Vincent de Paul Society NSW is offering one-off Community Assistance Grants of \$20,000 for recovery projects that benefit multiple people. Call 13 18 12.

Primary producers experiencing hardship as a result of the bushfires may be able to access free financial advice through the Rural Financial Counselling Service. Call 1800 686 175.

Council and the NSW Government are offering rates and fees relief. Call 02 6499 2345.

**Bega Valley Together is your 'go to' website for bushfire recovery news. Visit the page at, [begavalley.nsw.gov.au/Bega-Valley-Together](https://begavalley.nsw.gov.au/Bega-Valley-Together)**

**If you aren't online and want to know more about the services and support networks that could help, please call us on 02 6499 2345.**

**Struggling with recovery needs? Contact our Recovery Support Service. They're here to help ease the burden. Call 02 6499 2345, or email [recovery@begavalley.nsw.gov.au](mailto:recovery@begavalley.nsw.gov.au)**